



P.O. Box 671, Elgin, Illinois 60121
847 289-0800

LEASING INFORMATION:
PO Box 671
Elgin, IL 60121
847-289-0800
www.kresmeryproperties.com

OFFICE SUITE

BUILDING/SUITE FEATURES:

- MASONRY BEARING WALLS WITH BRICK VENEER FACADE
- MIXED CONSTRUCTION: IRON COLUMNS, TIMBER FRAMING,
- RATED GYP BOARD DEMISING WALLS
- GYP BOARD DEMISING WALLS
- GYP BOARD INTERIOR PARTITIONS
- CARPET OVER WOOD FLOOR - UPPER LEVEL
- CARPET OVER CONCRETE - LOWER LEVEL
- TIMBER WOOD - STAIRS & LANDINGS
- INSULATED ALUMINUM CURTAIN WALL SYSTEM
- EXPOSED VINTAGE MASONRY
- ADA LIFT

CEILING HEIGHT:
UPPER LEVEL: EXPOSED FRAMING @ +/-12'-0"
LOWER LEVEL: EXPOSED FRAMING @ +/- 7'-6"

SUITE 102 AREAS:

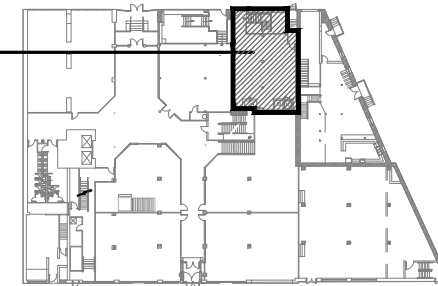
LOWER LEVEL	1,554 S.F.
UPPER LEVEL	1,298 S.F.
TOTAL	2,852 S.F. (USABLE)

DATE : 07/23/2018

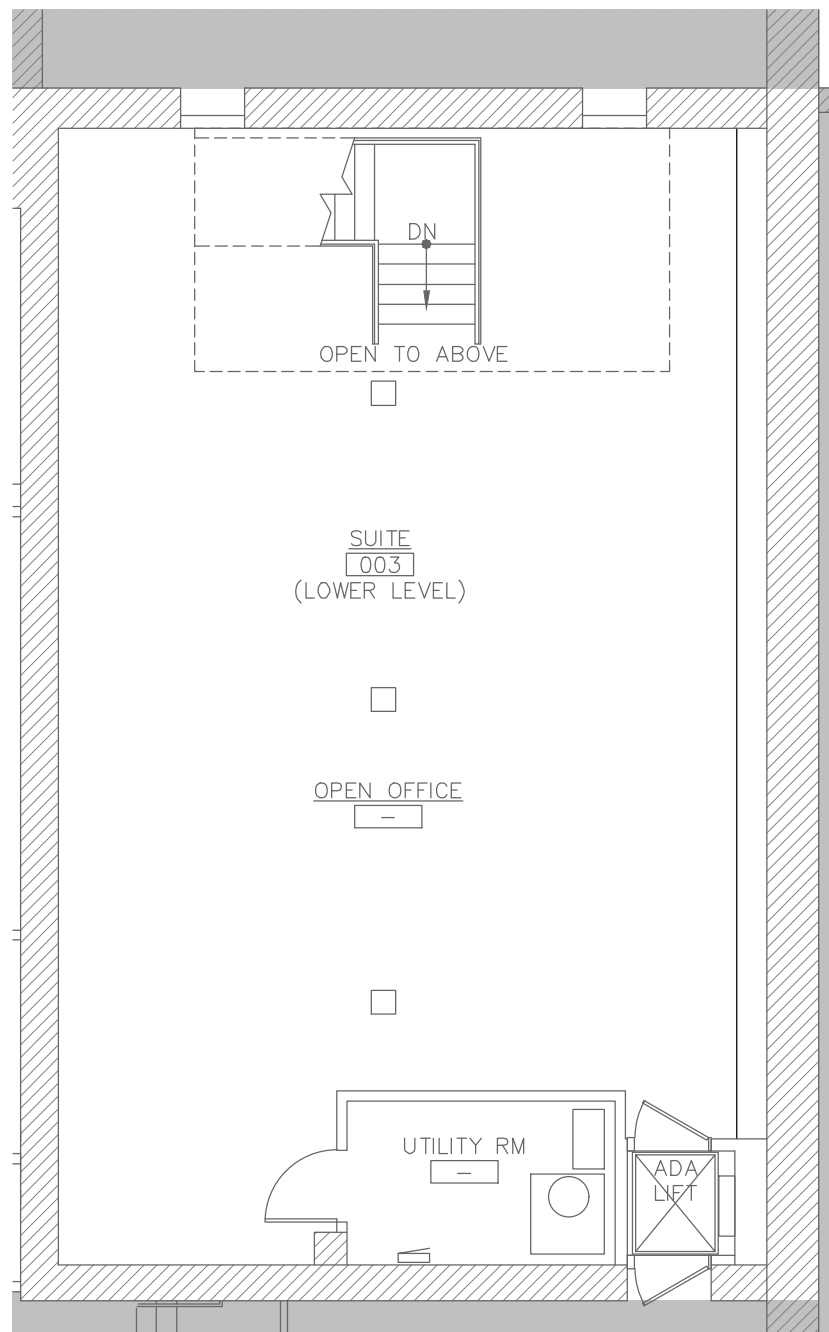
SCALE : 1/8" = 1'-0"

164 E. Highland Avenue
Elgin, Illinois

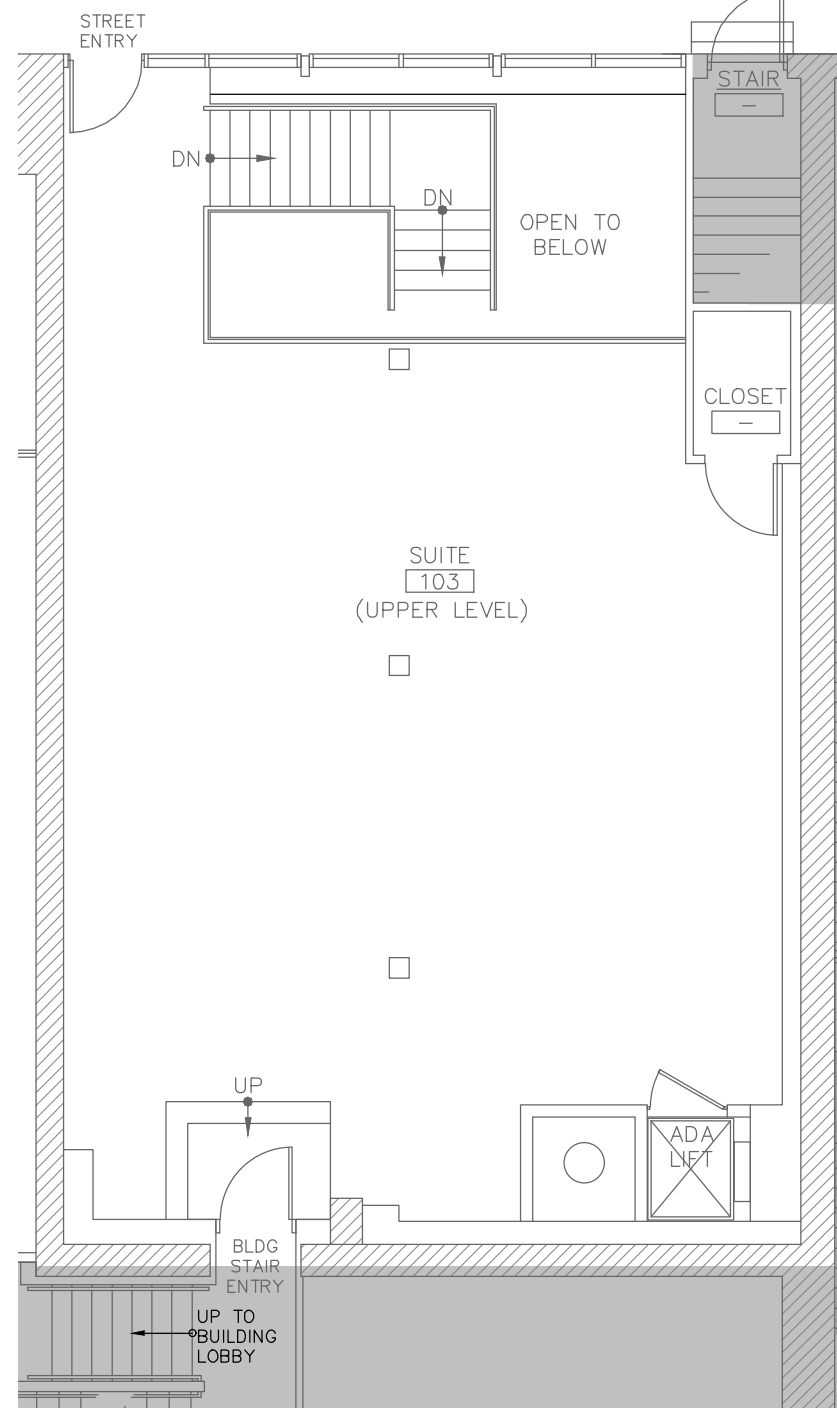
OFFICE SUITE UPPER LEVEL (FIRST FLOOR) LOWER LEVEL (BASEMENT)



FIRST FLOOR KEY PLAN
N.T.S.
NORTH



LOWER LEVEL PLAN (BASEMENT)
1,786 S.F.



UPPER LEVEL PLAN (FIRST FLOOR)
1,230 S.F.